



World Sustainability Fund Essence SUM 30B to 1T+ roll out plan

Creating The World We Need



Profile WSF - World Sustainability Fund

The logo for the World Sustainability Fund (WSF) is located in the top right corner. It features a circular emblem with a globe in the center, overlaid with the letters 'W', 'S', and 'F' in a stylized, overlapping arrangement.

- Since December 9, 2011 – Foundation, based on SBF - Stichting Bronning Fonds, May 29, 1992, next level of social responsibility
- For **Enduring Life**, Prosper health & wealth, Education
- Realizing “The Future We Need”
- U.N. & Major Group related global network



Profile Emile van Essen, P



- Born death 1957-01-01, Alive after prayer, at 33 FEL-Mastery
- Visionary, High Sensitive, IQ 137, Mensa 99%, HealerTeacher
- Studied: Super Study, Architecture & City ~, Permaculture, Economics, Export, Option Trading, Int. Exec. MBA, Religion (5 big + Theosophy, Anthroposophy, Baha'i, Essene, Scientology) , 300 Complementary Medicine, Quantum Thinking, ...
- Worked at: KLM, KPN, Ballast Nedam, CAP Gemini, France Telecom, Fortis, ...
- Business Owner, past: Constructor/Architect, BMW dealer, Int. Business Consultancy
- **Social Entrepreneur:** SBF, GHC, SUM, Presence Foundation
- Writer, Plan writer: Bronning Philosophy, Global Integrated Medicine Healthcare, Poverty Eradications, Human Rights

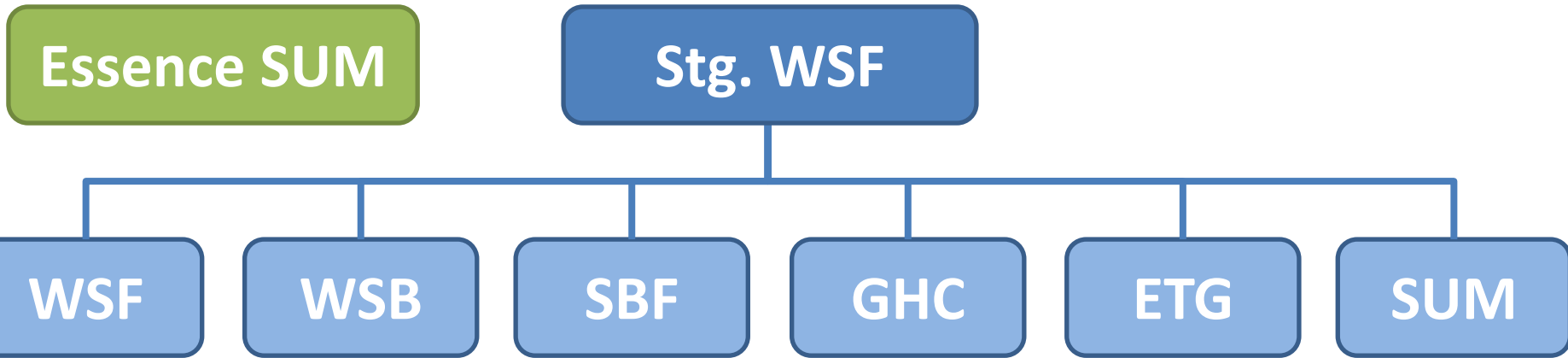


Profile Daniëlle Simons, VP



- Born May 15, 1964
- Danielle studied **law and philosophy** at the University of Leiden, graduated in 1990 and started working for one of the major law offices in the Netherlands, Loeff Claeys Verbeke, later **Allen&Overy**. She specialised in maritime law, bankruptcy law, corporate recovery, followed aftergraduate programs in corporate law and represented an international clientele in court;
- In 2006 she initiated a **corporate social responsibility** project between the Catholic Church and Dutch entrepreneurs, which was the beginning of a turning point in her career, from the mind to the heart;
- In 2008, she started investing in waste water technology with her **impact investment** company Rubicon River B.V., and from then on developed a new approach to waste water treatment with a consortium of specialists, retrieving valuable nutrients from waste water resulting in clean recyclable water, biogas, fertilizer, algae and reduction of CO₂;
- Mission: (1) to **stop the point of no return** that will make all ecosystems collapse and (2) to find ways to keep **feeding the growing population**





- Essence SUM – Overall Council
- Stg. WSF – Financial Management
- WSF – World Sustainability Fund HQ + Org.
- WSBank – World Sustainability Bank
- SBF – Sustainable Health Support
- GHC – **Sustainable Politics, Law, and Living**
- ETG – Sustainable Technologies Production
- SUM – Sustainable Products Outlets



Momentum

- Durban 200 Countries Sust.plan commitment
 - 250 Emission Clean Development Method's
 - Development Loan Scheme 135 Countries
 - 700 Financial Institutions USD 80T for Sust.
-
- Lack on plan level, development & management: **WSF fits the shift.**



U.N. SDG's* 2015-2030 Sept.2014

*SDG's = Sustainability Development Goals

- Including also the Millennium Goals
- Near 20 goals, without sufficient targets**
- Annual investment 10T to 15T (total 150T to 225T till 2030)

For “The World We Need**” for survival the targets will be not enough, new calculations follows after Sept. 2014 (**Needs +/- 40% extra**)



U.N. Post 2015 Agenda

Economic Issues

1. **End extreme poverty** and eradicate hunger: providing access to basic human needs and services, human rights based approach, and achieving development within planetary boundaries (Linked to All Other Goals) – 15T in 10 year, GHC*.
2. **Financing sustainable development**, economic transformation, debt, and taxation policy – 5T/year, WSF, WSB, GHC.
3. **Sustainable Consumption and Production**, corporate responsibility, Infrastructure development and transportation – 1T/year, WSF, WSB, ETG, SUM.

* [A Marshall Plan for Poverty Eradication.pdf](#)



U.N. Post 2015 Agenda

Environmental Issues

4. **Secure Ecosystem Services**, Biodiversity and Good Management of Natural Resources: resiliency, disaster prevention and response, ecotourism, forests, mountains, desertification, land degradation and drought – 3T/year, WSF, WSB, GHC
5. **Oceans**, water and sanitation, toxics and wastes – ...T, All orgs.



U.N. Post 2015 Agenda

Social Issues

6. **Ensure Effective Learning** for All Children and Youth for Life and Livelihood, protect and support cultural heritage – 1T/year, WSB, SBF, GHC
7. **Achieve Gender Equality**, Social Inclusion, and Human Rights – 1T/year, WSB, GHC
8. **Achieve Health** and Wellbeing at all Ages – 3T/year, SBF, WSF, WSB, GHC



U.N. Post 2015 Agenda

Multi-Dimensional Cross Cutting Issues

9. **Improve Agriculture** Systems and Raise Rural Prosperity
10. **Empower Inclusive**, Productive and Resilient Cities & Human Settlements – 1T/year, WSF, WSB, GHC.
11. Curb Human-Induced Climate Change and Ensure Clean **Sustainable Energy** for All – 1T/year, WSF, WSB, GHC.
12. **Transform Governance for Sustainable Development**: Means of implementation, global partnership, participatory processes, access to information and rule of law – WSF, GHC.
13. **Peaceful and non-violent societies**: peace building and conflict resolution and capable institutions – WSF, GHC.



WSF GOALS

1. Gathering of donations in all countries on Earth
2. Moderating “The Future We Need”
3. Moderating the U.N. “The Future We Want” results
4. Reporting “The Gap” between
“The Future We Need” & “The Future We Want”
5. Ranking of “The Most Polluting Habits and
Productions”
6. Moderating the ranking of “The Best CDM’s*
7. Moderation Project Proposals for “The Shift”
8. Moderating Projects for **realizing “The Shift”** ...

*CDMs = Clean Development Methodologies



Organization #Labor x 50k

1T+	ESSENCE SUM							EvE - 2014-04-24	
Confidential	19							© EvE	
#Labor	WSFund	WSBank	SBF Health	GHCommons	ETG Factories	SUM Stores	Total		
1 Council	12	12	12	6	6	6	54		
2 Board	12	12	12	6	6	6	54		
3 Strategy	60	60	100	12	12	12	256		
Finance	20	20	20	4	4	4	72		
HRM	20	20	20	4	4	4	72		
M&Sales	40	40	40	20	20	20	180		
4 Events	40	40	200	100	40	100	520		
Product	40	40	40	10	10	10	150		
Project	100	100	100	40	40	40	420		
ICT	20	20	20	4	4	4	72		
EDU	20	20	20	8	8	8	84		
TRANSLATION	100	50	50	8	8	8	224		
5 UN + MG	60	20	20	6	6	6	118		
SDG's P2015	180	90		30	30		330		
Industries	660	330		110	110		1210		
6 Facility Mgt	22	17	13	7	6	5	70		
	1.406	891	667	375	314	233	3.886	30.000	310.880.000
Reions Satellites (extra labor, see spec.)							153	80.000	12.240.000
Central RS&C mgt							1.110	30.000	88.800.000
Country	2.400	2.400	2.400	1.600	800	800	10.400	70.000	728.000.000
Div. projects		banks	resorts	cities	factories	outlets	15.549		1.139.920.000
Div. start ups	36.000						36.000	50.000	1.800.000.000
Div.	274.000	300.000	48.000	9.600	37.500	12.000	681.100	49.600	33.782.560.000
	313.806	303.291	51.067	11.575	38.614	13.033	731.386		
All-in price pp	50.000	50.000	50.000	50.000	50.000	50.000	50.000		
	1,57E+10	1,52E+10	2,55E+09	5,79E+08	1,93E+09	6,52E+08	3,66E+10		36.722.480.000
Div. \$	7,50E+11	7,50E+11	8,00E+10	4,80E+11	7,50E+09	2,00E+09	2,07E+12		
External	7,50E+11	1,20E+12					1,95E+12		
	1,52E+12	1,97E+12	8,26E+10	4,81E+11	9,43E+09	2,65E+09	4,06E+12		



In short

- Central organization 300M/year
- Central Region & Country.org 100M/year
- Country organizations 700M/year
- Country div. reservation 1.800M/year

Together

3B/year + 9B reserve

- Projects internal 2T+
- Projects external 2T+

Together

4T+ total



Global Impact, Roll-out & Dimensions

IMPACT:	WSFund	WSBank	SBF Health	GHCommons	ETG Factories	SUM Stores
- Climate	high	high				
- Social			high			
- Economic						high
- Politic				high		
- Scientific					high	
FINANCIAL:						
- Means	high	high	low	high	low	low
- Distribution						
- Payback time						
- Revenue						
- Profit	low	high	low	low	high	high

Roll-out	Dimensions
BLUR	GLOS
BluePrint DNA	GHR
Departments	In/Extern
Balanced Scorecard	Assets
Self Creating Abilities	Funds
	SDG
	CDM
	Industries
	Major Groups
	Countries
	NGOs
	Knowledge Institutes
	Individuals



WSFund

- **TWWN* development**
- In 200 Countries
- Over 250 CDM's**
- High Impact on Climate
- Financing large projects
- Low financial profit

*TWWN = The World We Need

**CDM's = Clean Development Methodologies

***SDG's = Sustainability Development Goals

WSBank

- Following WSF targets
- In 200 Countries
- Over 10 SDG's***
- High Impact on Humanity
- **Financing The Shift**
- High financial profit



$$C = E \times P \quad R = I \times U$$

- Climate = Emission times Population
- Rescue = Individual action times Utilization
- Emission: Limit E by rules, tech & governance
- Population: Limit P Resources based
- Action: Plan all possible labor
- Utilization: Facilitate means for E-reduction



Organization planning

Time path in weeks	ESSENCE SUM						EvE - 2014-04-11
Confidential	12						© EvE
	Blueprint	HRM Select	Education	Start up	Production	Report	Total
1 Council	1	4	1	1	4	1	12
2 Board	1	4	1	1	4	1	12
3 Strategy	2	8	1	1	2	1	15
Finance	3	8	1	2	4	1	19
HRM	3	4	1	1	1	1	11
M&Sales	3	8	1	3	4	1	20
4 Events	6	4	4	2	4	1	21
Product	6	8	1	2	4	1	22
Project	6	8	1	2	4	1	22
ICT	2	4	1	1	1	1	10
EDU	0	2	1	1	1	1	6
TRANSLATION	4	6	1	1	2	1	15
5 UN + MG	4	8	2	3	4	1	22
SDG's P2015	6	8	2	3	2	1	22
Industries	8	12	1	2	4	1	28
6 Facility Mgt	2	2	1	1	4	1	11
	57	98	21	27	49	16	268
Country	1	16	2	2	4	1	26
Div.	projects	banks	resorts	cities	factories	outlets	
Div.	10	10	1	4	4	1	30
..	68	124	24	33	57	18	



Organization Roll-out

1	Time path in weeks		ESSENCE SUM - WSF, WSB, SBF, GHC, ETG, SUM																								EvE - 2014-04-04					
2	Confidential		Blueprint				HRM Select				Education				Start up				Production				Report				+ Adjustments				© EvE	
3	Department	#Labor	1	2	3	4	5	6	7	8	9	10	11	12	13	14	15	16	17	18	19	20	21	22	23	24	25	26	27	28	29	30
4	4 EDU	84																														
5	1 Council	54																														
6	2 Board	54																														
7	7 Country	10.400																														
8	6 Facility Mgt	70																														
9	3 Strategy	256																														
10	4 ICT	72																														
11	3 Finance	72																														
12	3 HRM	72																														
13	3 M&Sales	180																														
14	4 TRANSLATION	224																														
15	5 UN + MG	118																														
16	4 Events	520																														
17	4 Product	150																														
18	4 Project	420																														
19	5 SDG's P2015	330																														
20	5 Industries	1.210																														
21	7 Div.	707.100																														
22	Phase		1. Big Bang				2. Universes				3. Galaxis				4. Milky Way				5. Solar System				6. Earth				7. Geneva				8. HQ	



Creating The World We Need

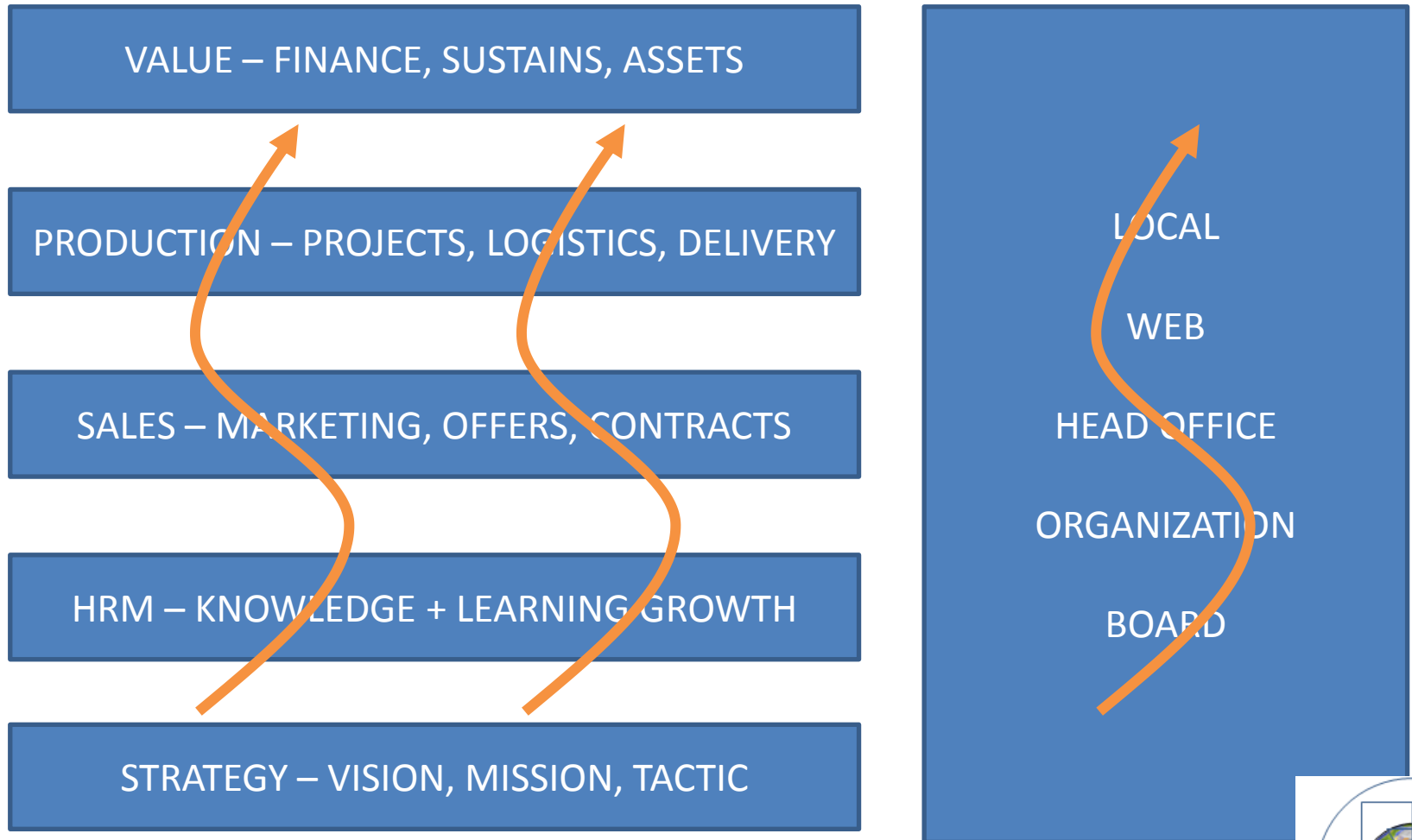
Creating The Shift



worldsustainabilityfund.nl

WSF

SPIRAL DYNAMICS STRATEGY



Location planning

- **Head Quarter** – NL, Utrecht
 - HQ Visitors Center – NL, Soestdijk ?
 - Central Region & Country mgt – NL, Den Haag
- **U.N. CDM Support** – DE, Bonn
 - U.N. HR & Health – CH, Geneva
 - U.N. GA & Sust. – USA, New York
- **Region Satellites** – Honk Kong, La Paz, OceansP, Kinshasa, Geneva, New York, Yakutsk
- **Countries** – Country dev. Offices, in Capitals



m2 / function

6 Sum	#Labor	HQ	SAT	m2 Sum	HQ	SAT	Count.
Council	54	12	42	1.350	308	1.042	
Board	54	54	-	1.350	1.350		
Strategy	256	158	98	6.400	3.950	2.450	
Finance	72	48	24	1.800	1.200	600	
HRM	72	48	24	1.800	1.200	600	
M&Sales	180	70	110	4.500	1.750	2.750	
Events	520	50	470	13.000	1.250	11.750	
Product	150	100	50	3.750	2.500	1.250	
Project	420	100	320	10.500	2.500	8.000	
ICT	72	48	24	1.800	1.200	600	
EDU	84	42	42	2.100	1.050	1.050	
TRANSLATION	224	90	134	5.600	2.250	3.350	
UN + MG	118	36	82	2.950	900	2.050	
SDG's P2015	330	110	220	8.250	2.750	5.500	
Industries	1210	320	890	30.250	8.000	8.545	13.705
Facility Mgt	70	25	45	1.750	625	1.125	
Total	3.886	1.311	2.575	97.150	32.783	50.662	13.705



m2 / Head Quarter & Satellites

6 Sum	#Labor	HQ	SAT	m2 Sum	HQ	SAT	Count.
WSFund	1.406	476	930	35.150	11.897	13.367	9.886
WSBank	891	325	566	22.275	8.121	10.335	3.818
SBF Health	667	241	426	16.675	6.030	10.645	-
GHCommons	375	106	269	9.375	2.644	6.731	-
ETG Factories	314	100	214	7.850	2.491	5.359	-
SUM Stores	233	64	169	5.825	1.599	4.226	-
Total	3.886	1.311	2.575	97.150	32.783	50.662	13.705

- HQ – NL, Utrecht, 33.000 m2, potential:
- Vliegend Hertlaan 15-97, 18.000 m2, 175/m2
- Europalaan 40, 16.500 m2, 150/m2



HQ Office



[Vliegend Hertlaan 15-97](#) ☆

3526 KT Utrecht 📍

18.000 m² · Units vanaf 500 m²

Colliers International Real Estate B.V.

[Europalaan 40](#) ☆

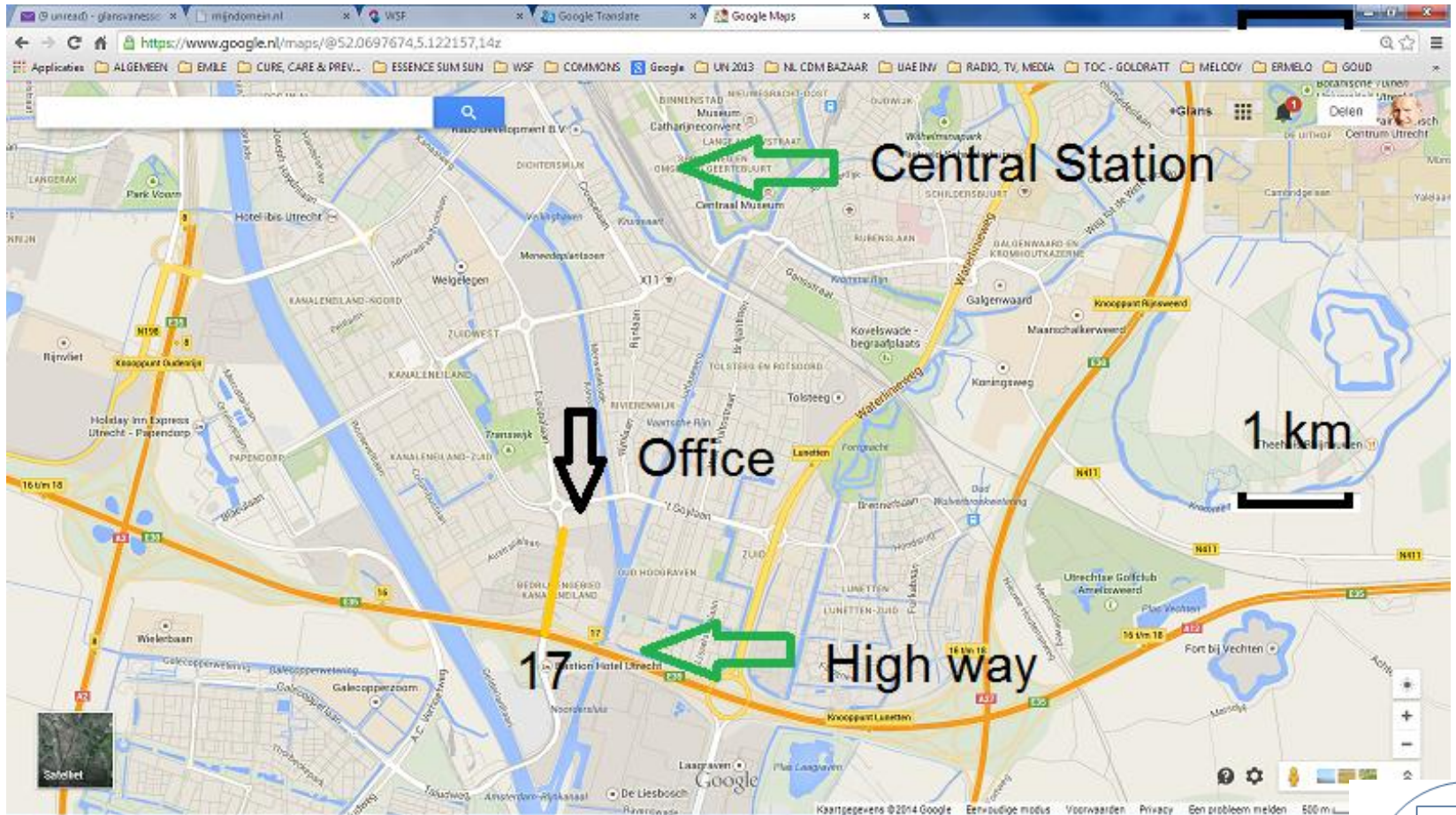
3526 KS Utrecht

16.483 m² · Units vanaf 1.434 m²

Ans de Wijn



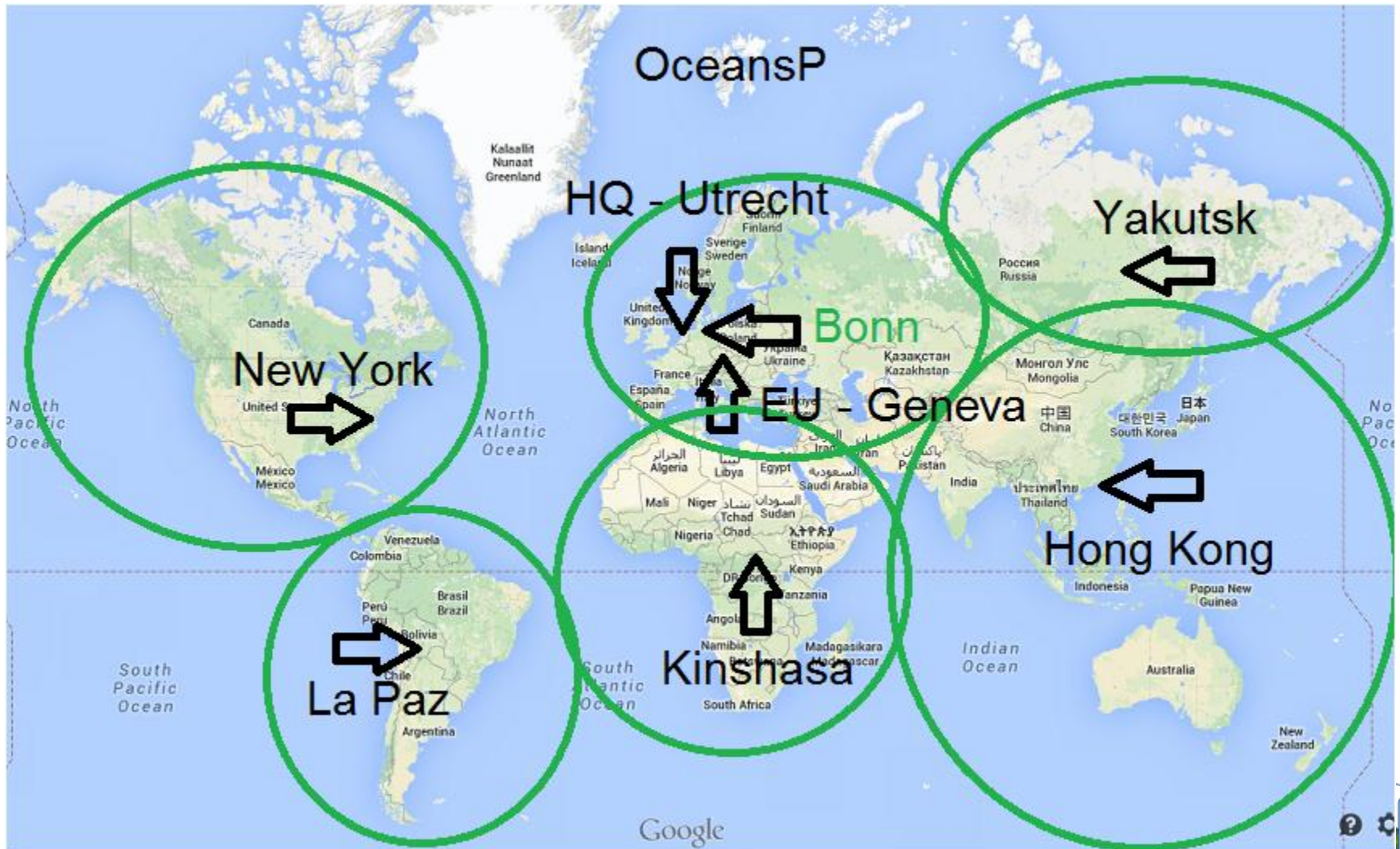
Utrecht



Central in NL, near main cities



HQ, SATELLITES & COUNTRIES



#Labor - General Calculation							
HQ, Sat, Coun	WSFund	WSBank	SBF Health	GHC	ETG	SUM Stores	Total
Utrecht	476	325	241	106	100	64	1.311
Den Haag	Central Satellite and Country Management						1.110
Bonn	287	166	45	57	57	17	630
Geneva	120	68	68	43	34	27	361
Kinshasa	80	54	61	31	22	25	274
New York	202	114	68	43	34	27	489
La Paz	80	54	61	31	22	25	274
OceansP	40	27	31	16	11	12	137
Hong Kong	120	82	92	47	33	37	411
Subtotal	1.406	891	667	375	314	233	3.886
Countries x 200	192	12	12	8	4	4	232
Total	39.806	3.291	3.067	1.975	1.114	1.033	50.286

m2 - General Calculation							
HQ, Sat, Coun	WSFund	WSBank	SBF Health	GHC	ETG	SUM Stores	Total
Utrecht	11.897	8.121	6.030	2.644	2.491	1.599	32.783
Den Haag	Central Satellite and Country Management						9.250
Bonn	7.187	4.153	1.119	1.434	1.434	423	15.750
Geneva	3.004	1.709	1.705	1.082	853	666	9.019
Kinshasa	2.004	1.359	1.530	782	553	616	6.844
New York	5.054	2.859	1.705	1.082	853	666	12.219
La Paz	2.004	1.359	1.530	782	553	616	6.844
OceansP	1.002	679	765	391	277	308	3.422
Hong Kong	3.006	2.038	2.295	1.173	830	925	10.267
Subtotal	35.158	22.278	16.678	9.371	7.846	5.821	97.150
Countries x 200	4.800	300	300	200	100	100	5.800



Central Region & Country mgt



[Laan van Nieuw-Oost-Indië 131](#)

2593 BM Den Haag

8.853 m² · Units vanaf 493 m²

COG Makelaars B.V.



WSF

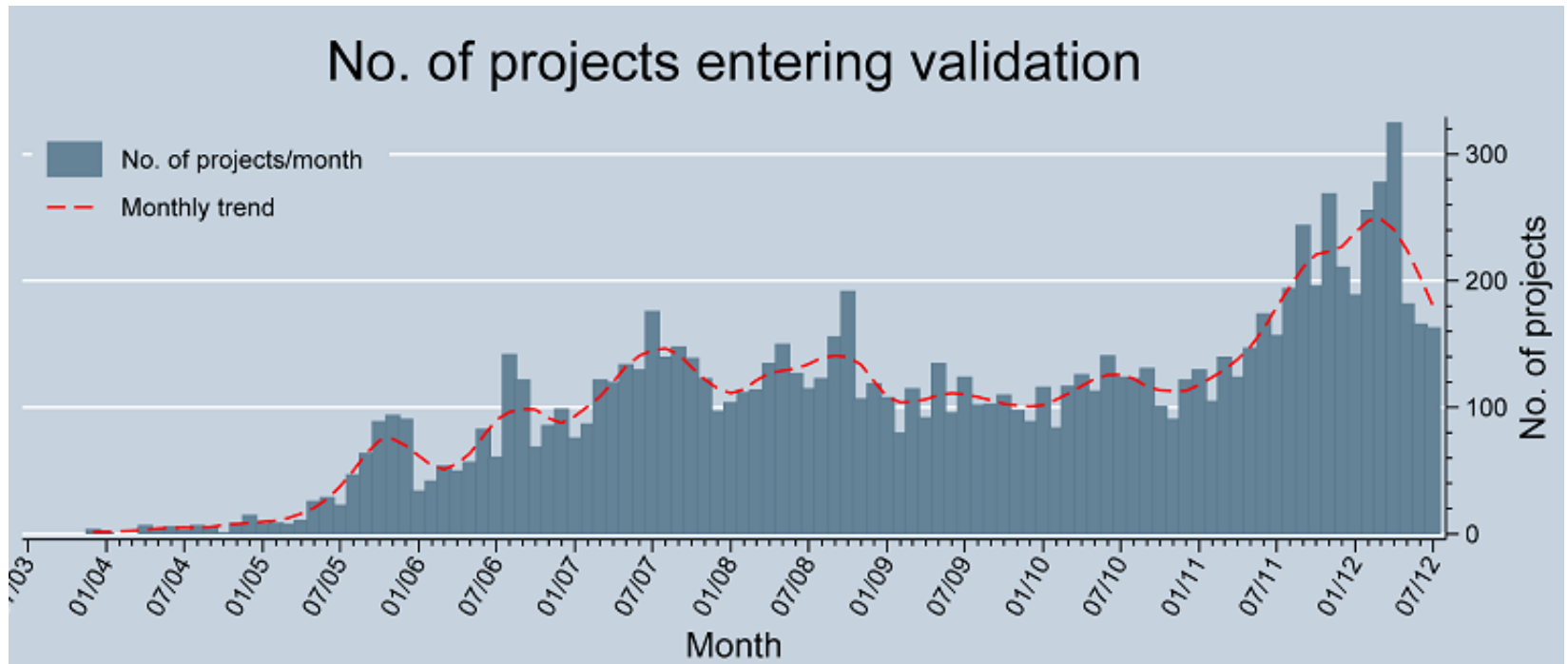
CDM PRODUCT LINE - 197N

UNFCCC CDM - Clean Development Methodologies		SECTORAL	#Baseline	Highest / sector			
15	Sector		234	Register	Reductions	Ra	Title
1	Energy industries (renewable - / non-renewable sources)		69	4-feb-13	709.360	4	Dapein (1) B
2	Energy distribution		6	13-nov-12	53.005	13	Lafarge Ecua
3	Energy demand		26	26-dec-12	71.458	12	Bundled pro
4	Manufacturing industries		34	24-dec-12	451.704	9	Jiangxi Was
5	Chemical industries		21	27-jun-12	473.759	6	Sable Chem
6	Construction		0	-	-	14	
7	Transport		16	3-jul-12	536.148	5	Bus Rapid Ti
8	Mining/mineral production		1	25 May 11	1.838.575	2	Jixi Coal Mit
9	Metal production		9	29-jan-10	433.789	10	Reduction i
10	Fugitive emissions from fuels (solid, oil and gas)		8	19-nov-12	1.227.737	3	Shanxi LuAr
11	Fugitive emissions from production and consumption of halocarbons and sulphur hexafluoride		10	8-aug-06	10.437.249	1	Project for t
12	Solvent use		0	-	-	15	
13	Waste handling and disposal		22	19-nov-12	462.153	7	Shenzhen B
14	Afforestation and reforestation		5	19-nov-12	462.153	8	Shenzhen B
15	Agriculture		7	13-dec-12	205.782	11	AWMS Metl



WSF Projects

CDM – Clean Dev. Methodologies



CDM LoanScheme + Bazaar

The screenshot shows the homepage of the CDM Loan Scheme website. At the top, there is a navigation bar with 'Contact' and 'Support' links. Below this, two yellow buttons offer 'Overview of projects supported by the CDM Loan Scheme' and 'Countries eligible to apply for loans in 2013'. A main navigation menu includes 'CDMLOANScheme', 'Loan Procedure', 'Application Timeline', 'User Guidance', 'Technical Review Committee', 'CDM Consultant Roster', and 'FAQ'. The main content area features a large background image of a solar panel array and a person wearing a green hard hat. The heading 'UNFCCC Loan Scheme for CDM' is prominently displayed. Below the heading, a welcome message explains the loan application process, including the preparation of a Project Design Document (PDD), validation by a Designated Operational Entity (DOE), and verification of Certified Emissions Reductions (CERs). Logos for the United Nations Framework Convention on Climate Change (UNFCCC), UNOPS, and the UNEP Risk Centre are shown. A notice states the next application deadline is 31-3-2013, with a link to read more about the yearly application deadlines.

Contact Support

Overview of projects supported by the CDM Loan Scheme Countries eligible to apply for loans in 2013

CDMLOANScheme Loan Procedure Application Timeline User Guidance Technical Review Committee CDM Consultant Roster FAQ

UNFCCC Loan Scheme for CDM

Welcome,
This site is an electronic loan application system. Loans are offered to provide financing for PDD development, validation and the 1st verification process. This includes: a) the preparation of the Project Design Document (PDD), b) the validation by a 'Designated Operational Entity' (DOE), c) verification of the first issuance of 'Certified Emissions Reductions' (CERs).

 **United Nations**
Framework Convention on
Climate Change

 **UNOPS**

 **UNEP**
RISØ
CENTRE

Next application deadline: 31-3-2013
[Read more about the yearly application deadlines here.](#)

Register as a CDM Consultant

Loan Application Form

Self Assessment



CDM LoanScheme + Bazaar

[Home](#) | [About CDM Bazaar](#) | [How to use the Bazaar](#) | [Contact](#) | [Legal](#) | [Glossary](#) | [RSS](#)

Welcome to the UNFCCC CDM Bazaar. This site currently holds **219 postings** from **6877 registered users**

United Nations Framework Convention on Climate Change presents the CDM Loan Scheme

CDM LOAN SCHEME

The overall objective of the CDM Loan Scheme is to support "Least Developed Countries" (LDC) and countries with less than 10 registered projects. The scheme provides loans to cover administration costs related to the development of CDM projects.

[Project Ideas](#) → [Sellers](#) → [Buyers](#) →

Latest CDM project ideas

2012/06/19 | [80MW Combined Cycle Gas T...](#)
2012/06/18 | [KADUNA WASTE TO ENERGY
GA...](#)
2012/05/15 | [Uganda \(see file attache...](#)
2011/09/26 | [AMS-IE Methodology: Sola...](#)
2011/06/30 | [BUVUMA REFORESTATION AN...](#)

Latest seller profiles

2012/07/04 | [Eneco Energy Trade B.V.](#)
2012/06/19 | [BERVIAC](#)
2012/06/12 | [Ecco-Synergy UK Ltd](#)
2012/05/22 | [Impulso Ecologico](#)
2012/05/15 | [Ambio Soluções Ambientais](#)

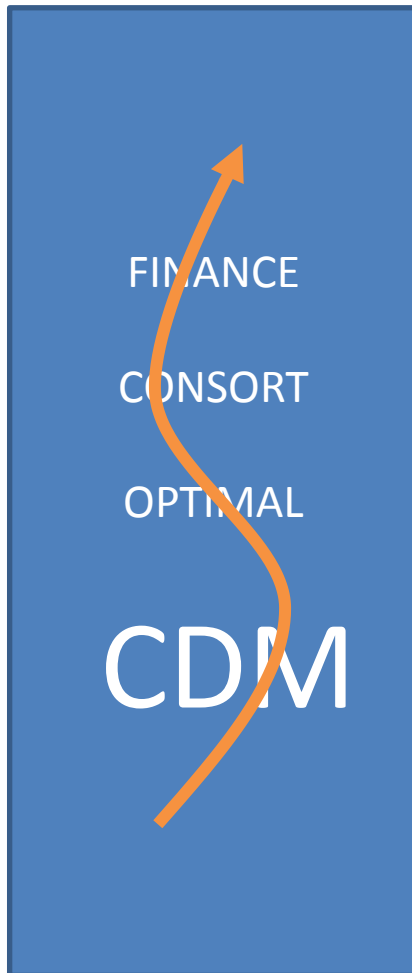
Latest buyer profiles

2012/07/17 | [SPMCIL](#)
2012/07/16 | [Consus Energy](#)
2012/07/04 | [Eneco Energy Trade B.V.](#)
2012/07/04 | [CarbonSoft Corporation Li...](#)
2012/07/01 | [Strategic Venture Fund Ltd](#)



WSF

CDM PRODUCT LINE



Intake R&D Finance route € 2.000

UN Loan Scheme request € 20.000

PDD R&D Support € 20.000

PDD Approved Loan +
Investment support 2%

PDD not-Approved Loan +
Investment support Cost + 3%

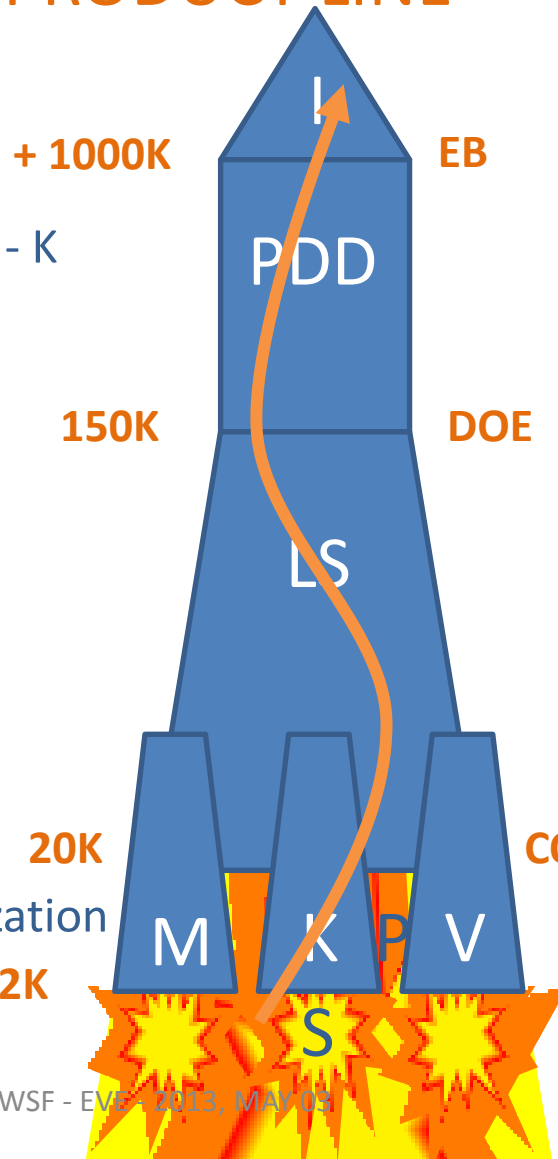


WSF

CDM PRODUCT LINE

The project rocket

- Strategy - S
- Knowledge & Learning growth - K
- Marketing and sales - M
- Product logistics - P
- Values & finance - V
- Loan Scheme - LS
- Project design - PDD
- Consultant - UNFCCC LS
- DOE - UNFCCC PDD Validator
- EB - UNFCCC Executive Board
- I - In the money, Finance & Investment for project realization



BY ERM, SUEZ,
JPM, BGP, ...

[page](#)

MULTI WASTE

[ERM, ...](#)

INVESTANCIA
SIX
POLYKARPIA
SIP
SFF
NORNED

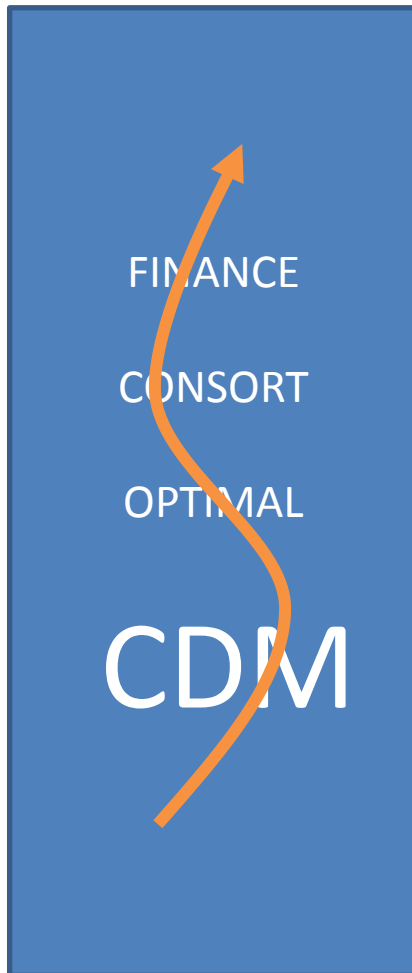
CONSULTANT

[GBP, ...](#)

AGRITERRA
JOHN LIU
ALAINNE
CoR, CDH

WSF

CDM PRODUCT LINE



SURE PDD APPROVAL PROJECTS:
Based on actual PDD registrations

135D: Sponsored with € 150.000
development support for 135
developing countries.

197N: Support large scale project
Copy/Past with PDD partners and
new local consortium partners.



WSF

SIP PRODUCT LINE



In: SIP sponsoring	€ 20.000
Out: WSF Org dev.	€ 6.000
1 PDD R&D support	€ 14.000
In: CDM Loan Scheme	€ 150.000
Out: SIP Sponsoring retour	€ 20.000
Out: Project plan dev.	€ 130.000
In: 1 PDD Financed	€ 50.000.000
Out: CDM Loan Scheme	€ 150.000
2% Finance support	€ 1.000.000
Project development	€ 48.850.000



WSF

SIP PRODUCT LINE



Project development € 48.850.000

Profit aim 10 % – 50% € 10.000.000

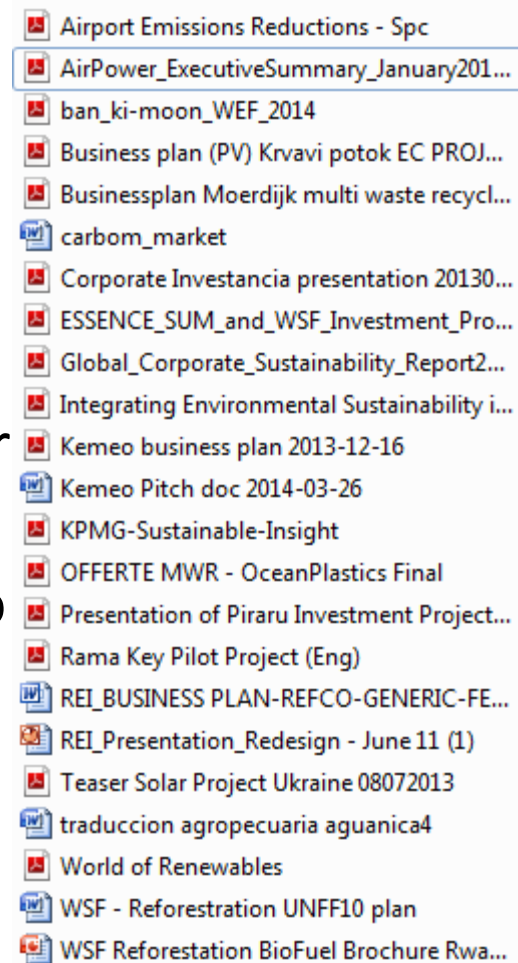
Profit split consortium:

- Sponsor € 2.500.000
- WSF € 2.500.000
- PDD Partner € 2.500.000
- New projects € 2.500.000



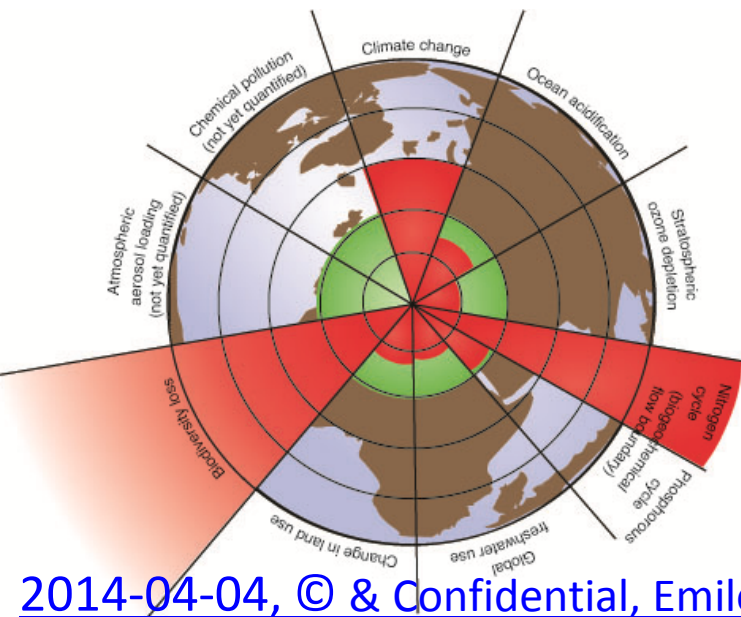
WSF - Projects

- 150.000.000 km² Reforestation, inv. 750B
- Airport CO₂ savings, inv. 90B, saving 30B/year
- Airpower Engines, 0 emission power
- Solarfarms Croatia, Ukraine, Rwanda, Mexico
- Save drinking water Outlets and Straws
- Waste water cleaning
- Ocean water Multi Waste Recycling
- City & Industrial Multi Waste Recycling
- Fish farms, Agriculture, Forestation
- 2nd Generation AgriBiofuel on non-food area
- Wind energy farms on land and at sea

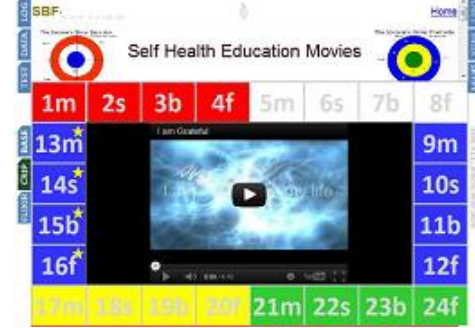


WS Bank - Projects

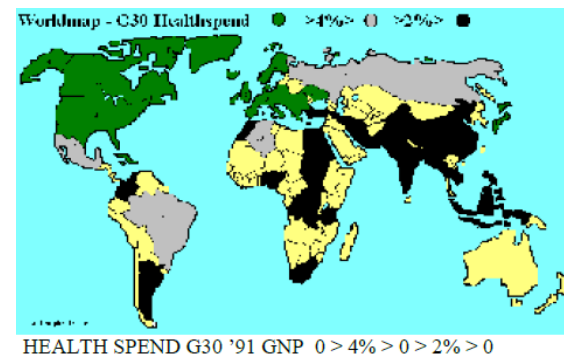
- Banking conform Brundtland definition
- Banking recognizing people, planet, profit
- Targeting (life plan) savings & sust. investment



SBF - Projects



- 42 Integrated Medicine Center in 30 Countries
- 10.000 beds, Covering 80% of population
- Internet popular I.M. education and support
- Global I.M. Masters Program at Universities
- Buying/Merging with 400 healthcare institutes
- Investing 10B+ based on ready business plans



GHC – Projects

- Poverty Eradication & Disaster avoidance
- UN MG NGO Commons Cluster represent one billion co-operative working people
- Commons are the politics for the next 60 year
- Emile is director of the Commons IRNetwork
- Promoting Global Layers Of Sustainability
- Promoting 10 Sustainability Human Rights
- Realizing Rural living hoods & City planning



Table 1 - Funding Themes – Basic Income must become a yearly Human Right	Costs in billion US \$
Start-up 2-3 year + 10 year Global Head Office, 250 Country & NGO Offices + Control Staff: 250 HO + 1.500 C&NGO + 500 Control	2
Poorest 2% - 1 year Basic Income \$ 250 + ORG 130 million people (av. GDP \$ 588), 7 countries	34



ETG - Projects

- Factories for sust. engines, batteries & energy
- Factories for plastic replacing products
- Factories for sust. lightning products
- Factories for sust. transport solutions
- Factories for sust. construction & housing
- Factories for sust. agri- & forest cultures
- Factories for sust. consumer products



SUM - Outlets



- SUM monuments for sust. promotion
- Consumer products for sustainable living
- Hydrogen apps for fuel and CO₂ savings
- Home windmills & solar panels
- Webshop and shopping mall outlets
- Web apps for sust. Living
- Footprint calculation



WSF – HQ, Visitors Center ?

- Int. Center for Sustainability, Integrate Health, and Leadership development.



Creating The Shift

Thank You



worldsustainabilityfund.nl

Putting WSF in global perspective

- By top: GDP, SWF's, Banks & NGO's
- By Population stress
- By CDM development



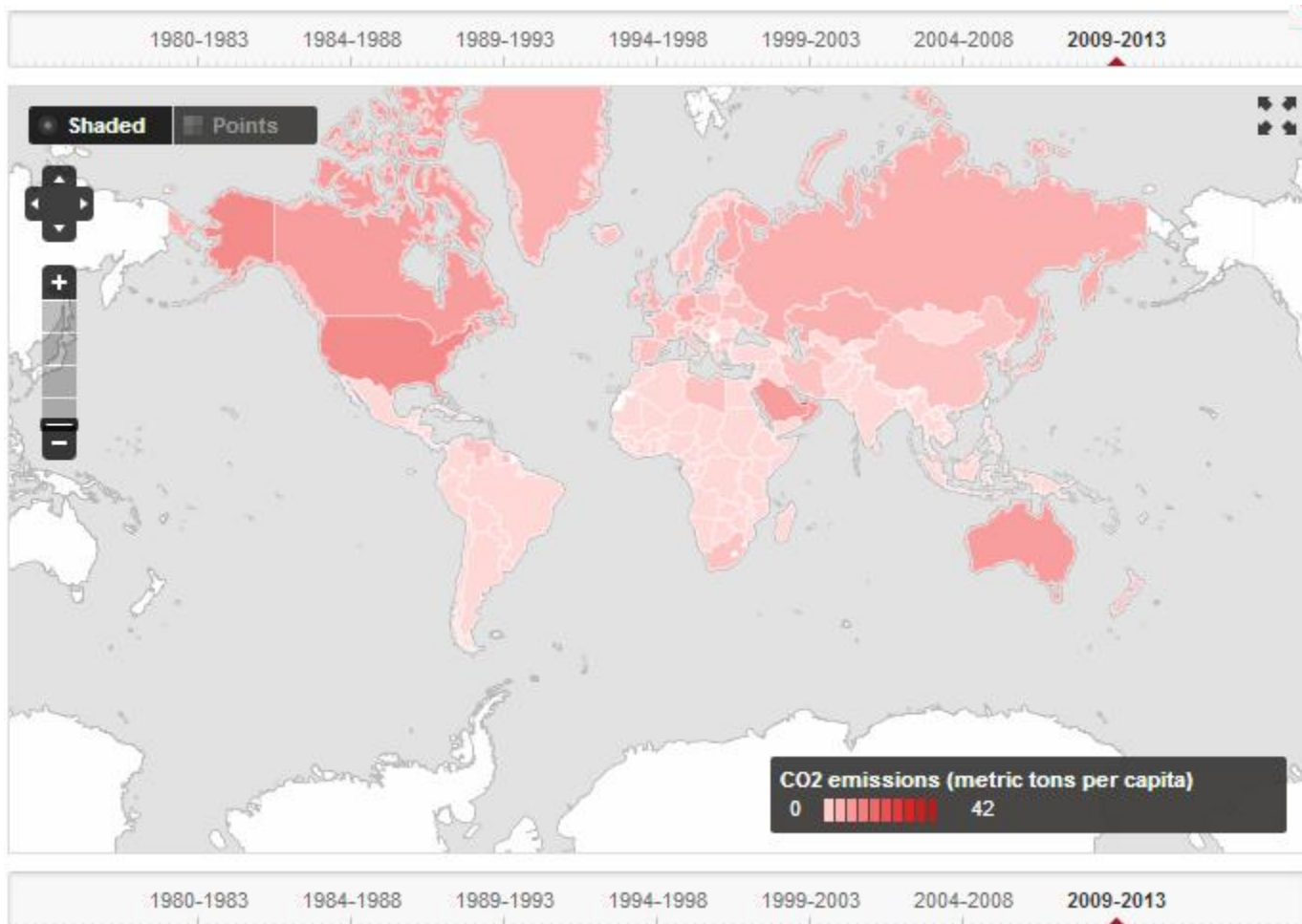
GDP Largest Economies *

#	<i>Economy</i>	<i>billions of US dollars</i>	<i>% of World</i>	<i>Relative</i>	<i>billions of US dollars</i>	<i>% of World</i>
1	United States	16.245	22	World	72.440	100
2	China	8.227	11			
3	Japan	5.960	8	Low income	504	1
4	Germany	3.428	5	Middle income	22.250	31
5	France	2.613	4	Lower middle in	4.824	7
6	United Kingdom	2.472	3	Upper middle in	17.427	24
7	Brazil	2.253	3	Low & middle inc	22.769	31
8	Russian Federation	2.015	3	East Asia & Pac	10.330	14
9	Italy	2.015	3	Europe & Centra	1.888	3
10	India	1.842	3	Latin America &	5.344	7
11	Canada	1.821	3	Middle East & N	1.541	2
12	Australia	1.532	2	South Asia	2.286	3
13	Spain	1.323	2	Sub-Saharan Af	1.290	2
14	Mexico	1.178	2	High income	49.718	69
15	Korea, Rep.	1.130	2	Euro area	12.192	17
16	Indonesia	878	1			
17	Turkey	789	1			
18	Netherlands	771	1			
19	Saudi Arabia	711	1			
20	Switzerland	631	1			

*GDP = Gross Domestic Product



CO2 emissions per capita *



World's Largest SWF's 2013*

Country	Sovereign Wealth Fund Name	Assets \$Billion	Inception	Origin	Transparency Index
Norway	Government Pension Fund – Global	\$838	1990	Oil	10
UAE – Abu Dhabi	Abu Dhabi Investment Authority	\$773	1976	Oil	5
Saudi Arabia	SAMA Foreign Holdings	\$675.9	n/a	Oil	4
China	China Investment Corporation	\$575.2	2007	Non-Commodity	7
China	SAFE Investment Company	\$567.9**	1997	Non-Commodity	4
Kuwait	Kuwait Investment Authority	\$410	1953	Oil	6
China – Hong Kong	Hong Kong Monetary Authority Investment Portfolio	\$326.7	1993	Non-Commodity	8
Singapore	Government of Singapore	\$320	1981	Non-Commodity	6

*SWF's = Sovereign Wealth Funds



GPF Norway *1, *2

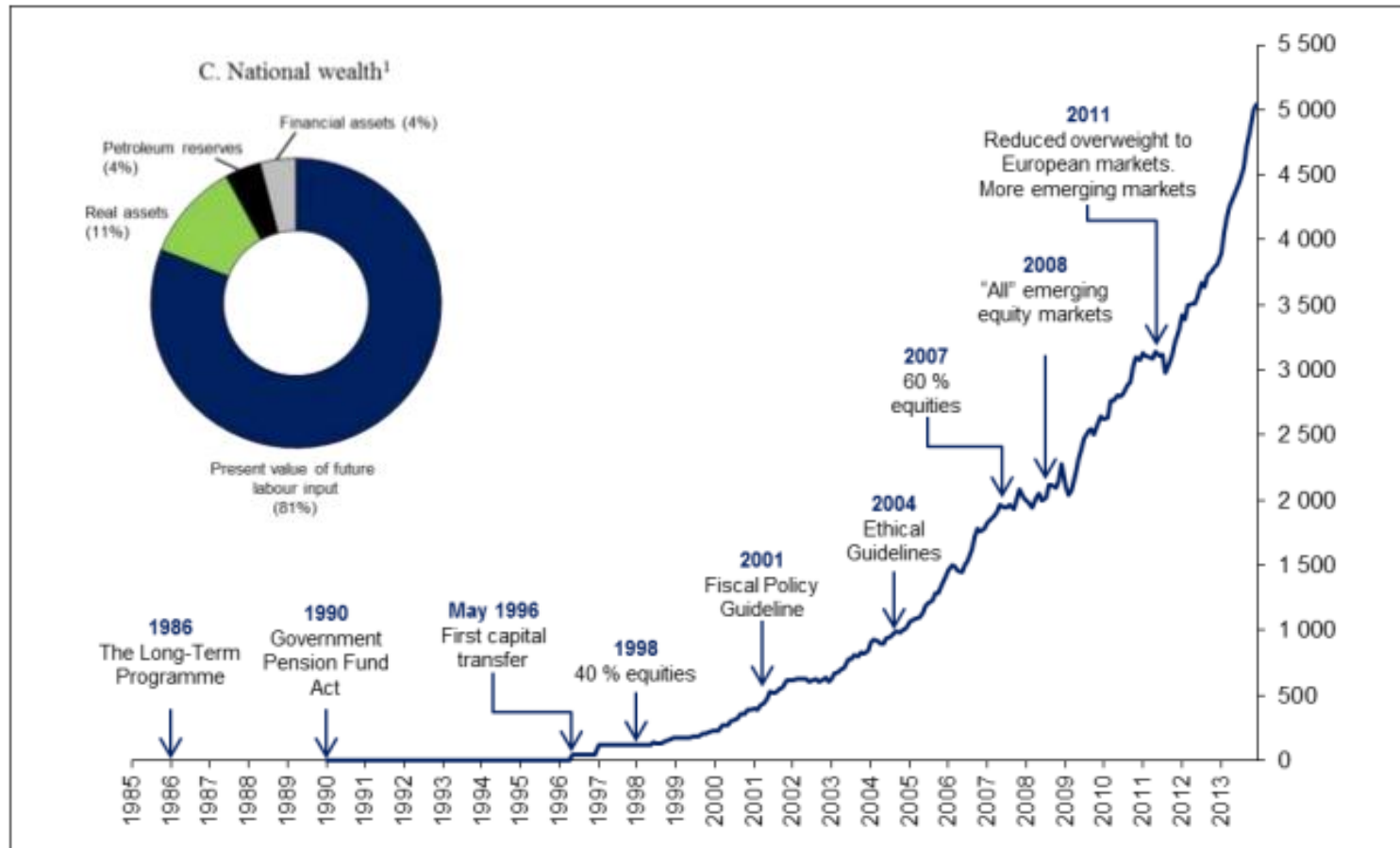


Figure 1.1 Historical development of the market value of the Government Pension Fund Global. NOK billion.



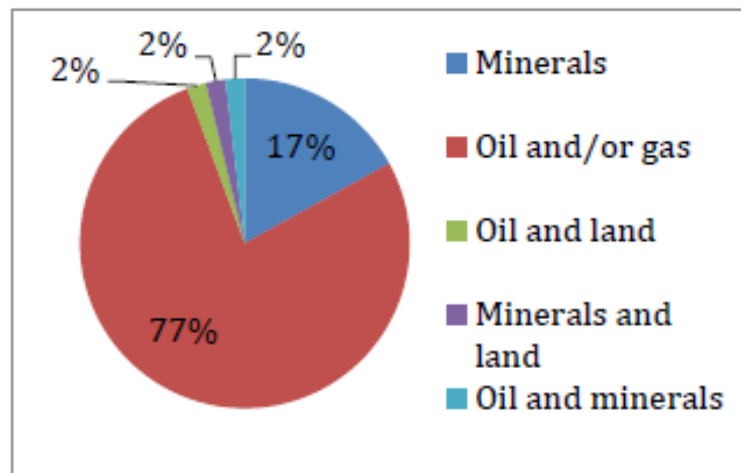
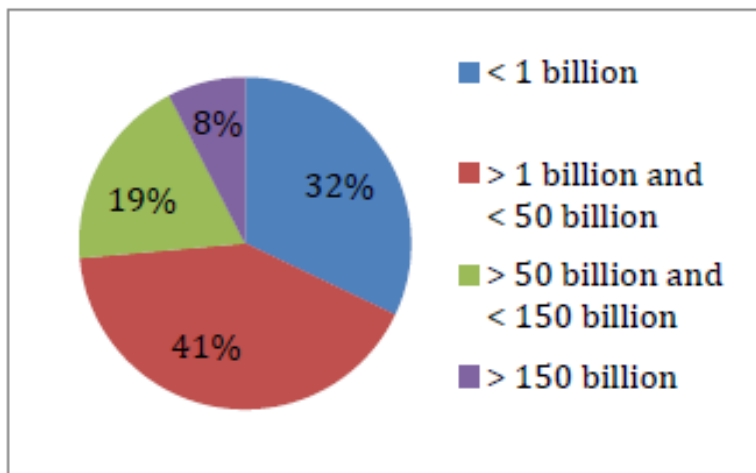
The \$3.5 Trillion Question: How to make natural resource funds work for citizens

What is this study about?

www.revenuewatch.org/nrf

We surveyed 22 out of 53 natural resource funds—government-owned sovereign wealth funds that are financed largely by oil, gas and mineral revenues—in 18 national and subnational jurisdictions. We examined their management, investments, transparency, and accountability to the public, as well as the fiscal rules that govern them.

Breakdown of all 53 natural resource funds by size (USD) and principal source of financing



Source: RWI at



World's Largest Banks 2013*

Rank	Bank	Country	M cap, US\$b, 30/04/2013		M cap, US\$b, 25/01/2013
1	Industrial & Commercial bank of China (ICBC)	China	233.6	400.000 Labor	237.97
2	China Construction Bank	China	207.6		188.12
3	HSBC Holdings	UK	202.4	250.000 Labor	207.34
4	Wells Fargo & Co	US	200.2		185.06
5	JP Morgan Chase & Co	US	187.6		179.40
6	Agricultural Bank of China	China	142.9		147.27
7	Citigroup	US	141.8		129.97
8	Bank of America	US	133.2		125.24
9	Bank of China	China	130.0		132.85
10	Commonwealth Bank of Australia	Australia	122.3		105.77
11	Westpac Banking Corporation	Australia	108.5		88.84
12	Mitsubishi UFJ Financial Group (MUFG)	Japan	96.37		75.10
13	Australia and New Zealand Banking (ANZ)	Australia	90.37		74.03
14	Royal Bank of Canada	Canada	87.17		89.18
15	National Australia Bank	Australia	82.38		65.37



HSBC Annual Report 2013*

- 54 million customers, 6.300 offices
- 75 countries, HQ London
- 250.000 labor, 889 tons CO₂ emission
- \$ 207 billion market capitalisation
- \$ 3.028 billion exposures
- Our purpose is to be where the growth is, ...



Estimated leverage ratio

	At 31 December	
	2013 US\$bn	2012 US\$bn
Tier 1 capital under CRD IV (end point)	133	116
Exposures after regulatory adjustments	3,028	2,760
Estimated leverage ratio (end point)	4.4%	4.2%



Top NGO's *1, *2

IMPACT	INNOVATION	SUSTAINABILITY
1. BRAC	1. WIKIMEDIA FOUNDATION	1. BRAC
2. WIKIMEDIA FOUNDATION	2. ACUMEN FUND	2. PARTNERS IN HEALTH
3. DANISH REFUGEE COUNCIL	3. APOPO	3. RARE
4. MÉDECINS SANS FRONTIÈRES	4. BRAC	4. AMNESTY INTERNATIONAL
5. ACUMEN FUND	5. CURE VIOLENCE	5. DANISH REFUGEE COUNCIL
6. PARTNERS IN HEALTH	6. CERES	6. HANDICAP INTERNATIONAL
7. CARE INTERNATIONAL	7. RIDERS FOR HEALTH	7. INTERNATIONAL RESCUE COMMITTEE
8. INTERNATIONAL RESCUE COMMITTEE	8. WATER FOR PEOPLE	8. HUMAN RIGHTS WATCH
9. SAVE THE CHILDREN INTERNATIONAL	9. PARTNERS IN HEALTH	9. OPEN SOCIETY FOUNDATIONS
10. HANDICAP INTERNATIONAL	10. BAREFOOT COLLEGE	10. WIKIMEDIA FOUNDATION



BRAC * _



- An estimated 135 million people reached
- More than 120,000 full-time and contract staff
- 4.5 million microfinance clients
- 1.4 million ultra-poor program participants
- 1.3 million schoolchildren enrolled
- 312,000 adolescent empowerment club members
- 114,000 community health workers
- 11 countries, \$ 55 million grants



Population stress

Citizens expect their governments to lead on sustainability. But from largely disappointing international conferences like Rio II to the failure to pass meaningful climate legislation, governments' progress has been lackluster. That's not to say leadership is absent; it just often comes from the bottom up rather than the top down. Action—on climate, species loss, inequity, and other sustainability crises—is being driven by local, people's, women's, and grassroots movements around the world, often in opposition to the agendas pursued by governments and big corporations.



Creating The Shift

Thank You

For complete business plan visit [>>>](#)



worldsustainabilityfund.nl